

# The Autopuller

By CLAY DELAY

Model APHC-A

with Buzzer

Owner's Manual



CLAY DELAY  
115 Roycroft Dr. West Seneca NY 14224  
Phone 716-674-4489 E-mail: autopullers@claydelay.com  
www.claydelay.com

CLAY DELAY  
115 Roycroft Dr. West Seneca NY 14224  
Phone 716-674-4489 E-mail: autopullers@claydelay.com  
www.claydelay.com

Model APHC-A is a handheld target machine release with a counter, containing an internal buzzer. The buzzer is user selectable and allows the puller to both feel and hear the target launch signal.

**Operation is simple:**

Turn on using the top rocker switch. Press the button that corresponds to your desired target and the target is released. The counter will advance one count for a single and two counts for a double.

Holding the button down will not give multiple targets. You must press the button for each target launch you want.

Note:

- The buzzer and machine signal times are not field adjustable. You must use the counter reset box to change the settings.
- The buzzer on/off is field selectable.

## Buzzer ON/OFF

### **Buzzer selection:**

When the buzzer is turned on, you will have an audible signal that a button has been pressed. This time is adjustable for the length of the sound. (Refer to Buzzer signal adjustment to change buzzer signal time.)

To change the on/off state:

1. While pressing and holding the center button turn the controller on.
2. The buzzer will cycle on, pause 1 second, then off, pause 1 second, then back on. (This continues until you release the center button.)
3. If you desire to have the buzzer on, release center button when the buzzer is on.
4. If you desire to have the buzzer off, release center button when the buzzer is off.

Once you release the center button, your unit is ready to use.

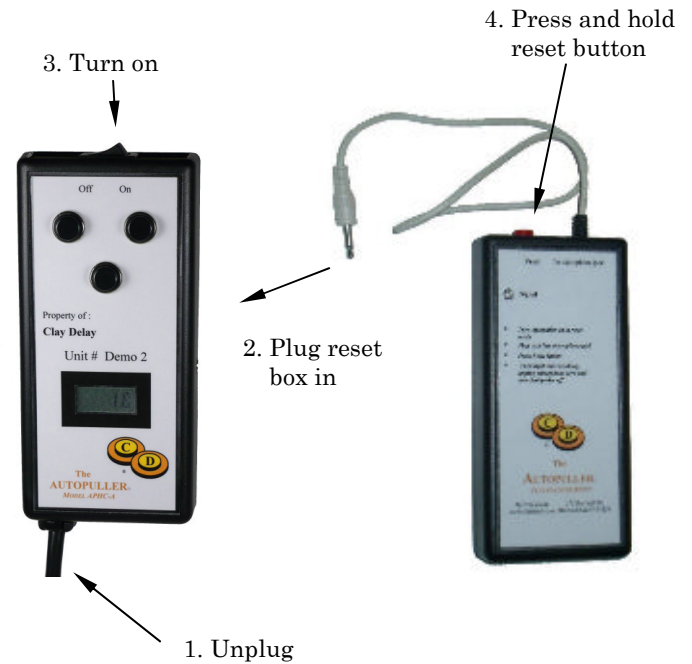
# Buzzer Sound Length

## Buzzer sound length adjustment:

If you desire a longer or shorter buzzer signal, use this procedure to adjust.

To adjust:

1. Unplug controller from target machine.
2. Plug the reset box in side of controller.
3. While pressing and holding the left button turn the controller on. Release the left button.
4. Press the reset box button, and hold until the counter resets to 0. Release the reset button.
5. The counter will now advance to the current signal value.
6. Reset the counter again.
7. Press and release the left button on the controller until the new desired value is displayed.
8. Press the center button to store the value. The display will go back to 0 once value is stored.
9. The new buzzer signal length will now be used.

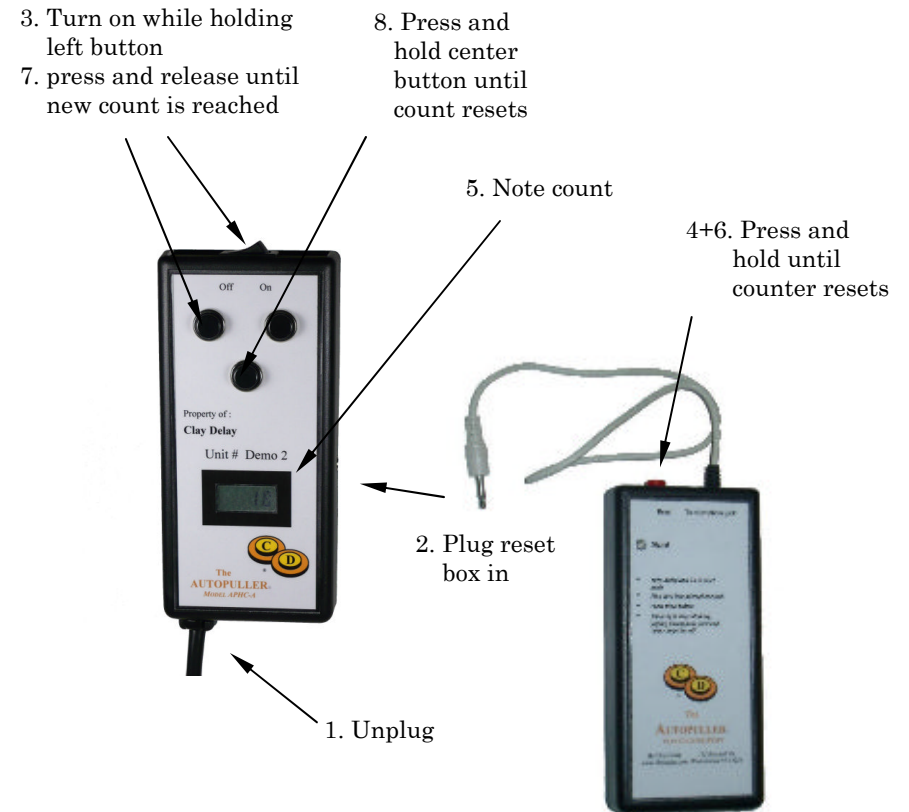


## Counter Reset

### Resetting the counter:

1. Unplug the Autopuller from the course before resetting.
2. Plug the reset box cable in the side jack.
3. Turn the Autopuller on.
4. Press and hold the reset button on the top of the reset box.
5. The signal light on the reset box will come on steady and approximately 3 seconds later, the counter will reset.
6. Release the reset button, unplug the reset box, and turn the controller off.

## Buzzer Sound Length



## Machine Signal

### Machine signal adjustment:

If you have a slower cycling machine, you may have to increase the machine signal length.

To adjust:

1. Unplug controller from target machine..
2. Plug the reset box in side of controller.
3. While pressing and holding the right button turn the controller on. Release the right button.
4. Press the reset box button, and hold until the counter resets to 0. Release the reset button.
5. The counter will now advance to the current signal value.
6. Reset the counter again.
7. Press and release the right button on the controller until the new desired value is displayed.
8. Press the center button to store the value. The display will go back to 0 once value is stored.
9. The new machine signal length will now be used.

The base time is .4 second machine signal. Each count on the display will add .1 seconds. A count of 10 will give a signal of 1 second. A count of 15 will give a signal of 1.5 seconds. The max time is 3 seconds, a count of 30.

If the new time is too long, or still too short, repeat the procedure. Keep in mind that each time you start, the timer resets to 0. (If you select less than 4, your unit will automatically set the signal to 4.)

## Machine Signal

